



"Education through self-help is our motto" - Karmaveer

Rayat Shikshan Sanstha's

SAVITRIBAI PHULE MAHILA MAHAVIDYALAYA, SATARA

Arts, Commerce (U.G.,P.G.) B.C.A.

SATARA-415001 (MAHARASHTRA)

AFFILIATED TO SHIVAJI UNIVERSITY, KOLHAPUR

Reaccredited at "A" Grade (CGPA-3.04) by NAAC, Bangalore

■ E-mail : savitribai_phule@yahoo.com ■ Web : www.spmmedu.in ■

Founder : Padmabhushan Dr.Karmaveer Bhaurao Patil, D.Litt.

Estd. June 1989

Tel : 02162-231705

Govt. Approval No.:

N.G.C.3589/(1855)

Vishi 2 dt.17/6/1989

Prin.Dr.Shivling Menkudale

M.A.,M,Phill,Ph.d.

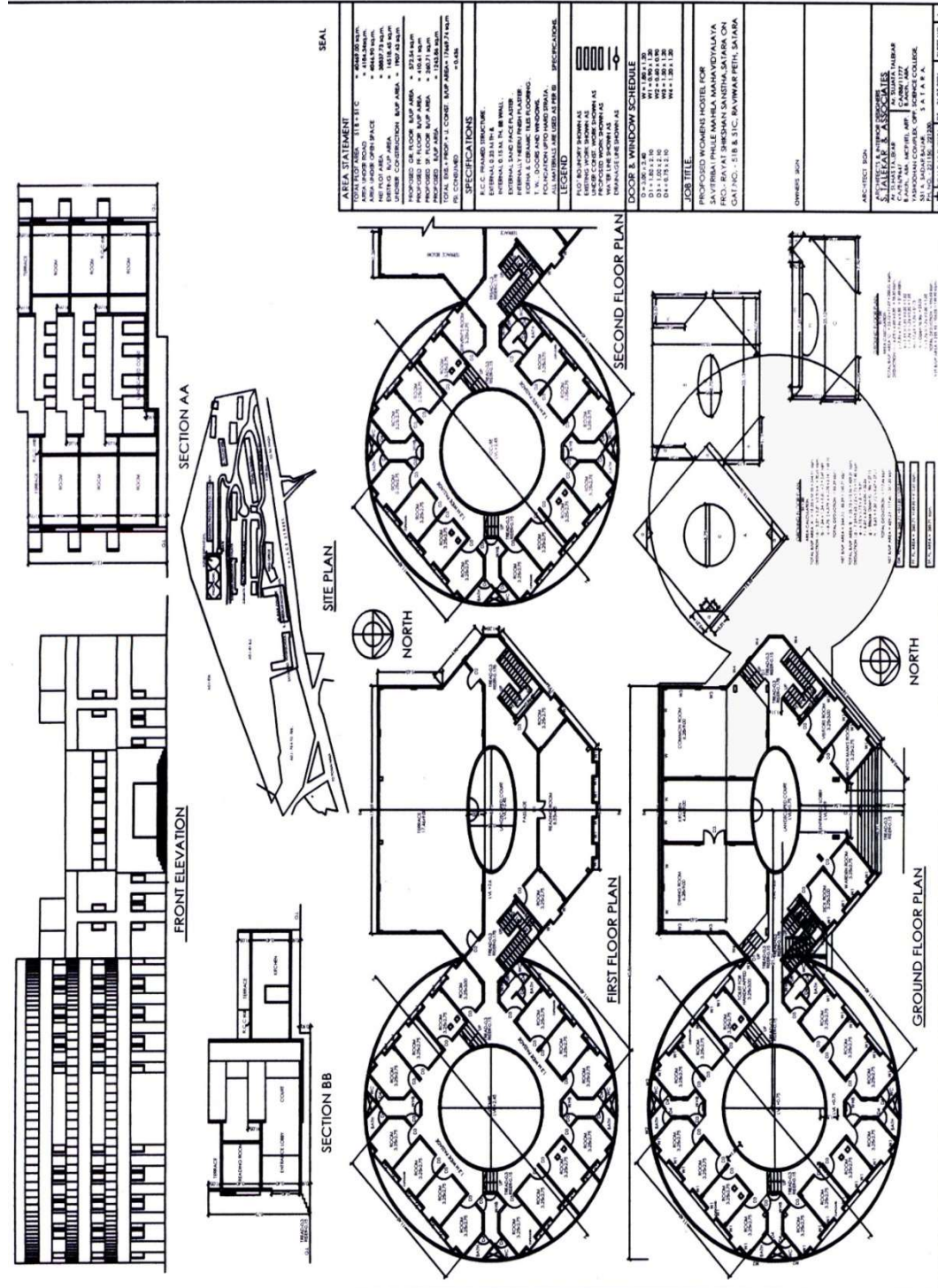
4.1.1.1 The Institution has adequate infrastructure and physical facilities for teaching- learning. viz., classrooms, laboratories, computing equipment etc.

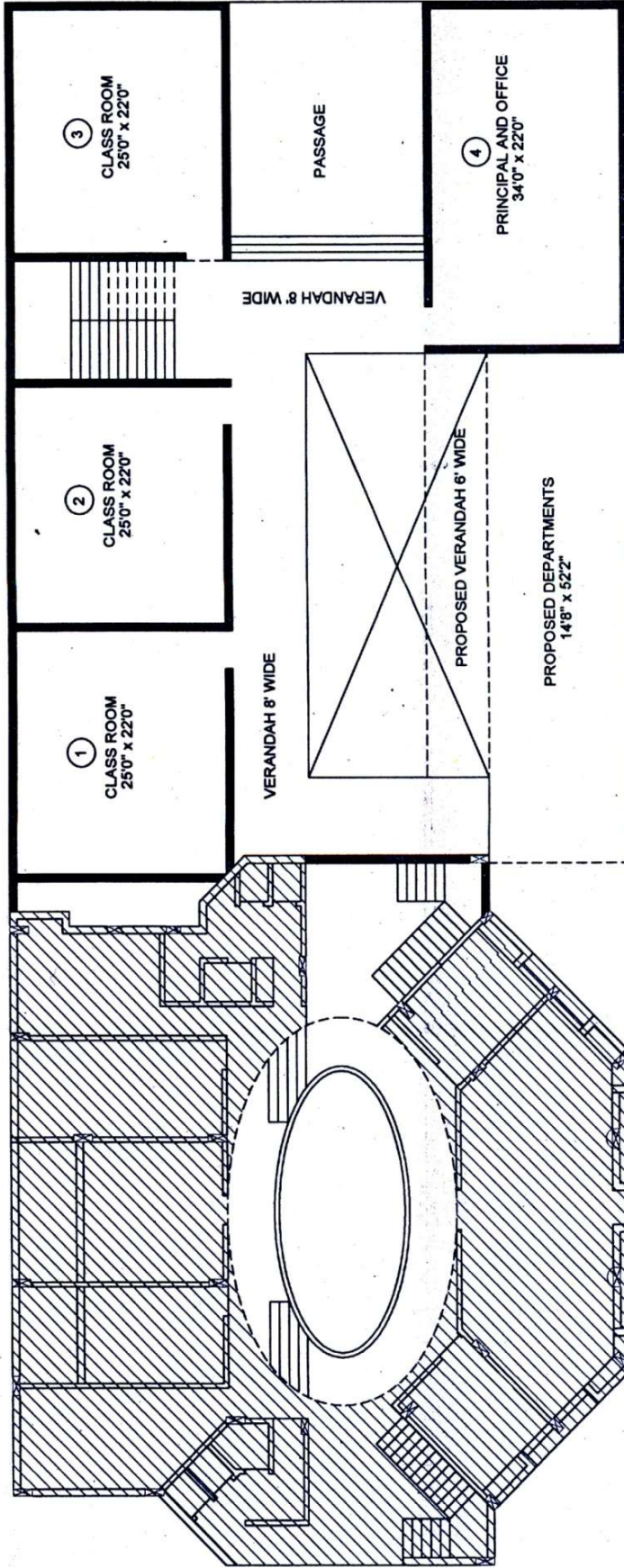
Sr. No.	Particulars	Page No.
1	Institute Building Plan	1 to 4
2	Floor Details with ICT Facilities	5 to 7
3	Ladies Hostel Facility	8
4	College Building	9
5	Ladies Hostel	10
6	Library	11
7	Laboratories with ICT Facilities	13 to 16

Annexure- IX

Institute Building Plan

Master Plan of Infrastructure





GROUND FLOOR PLAN

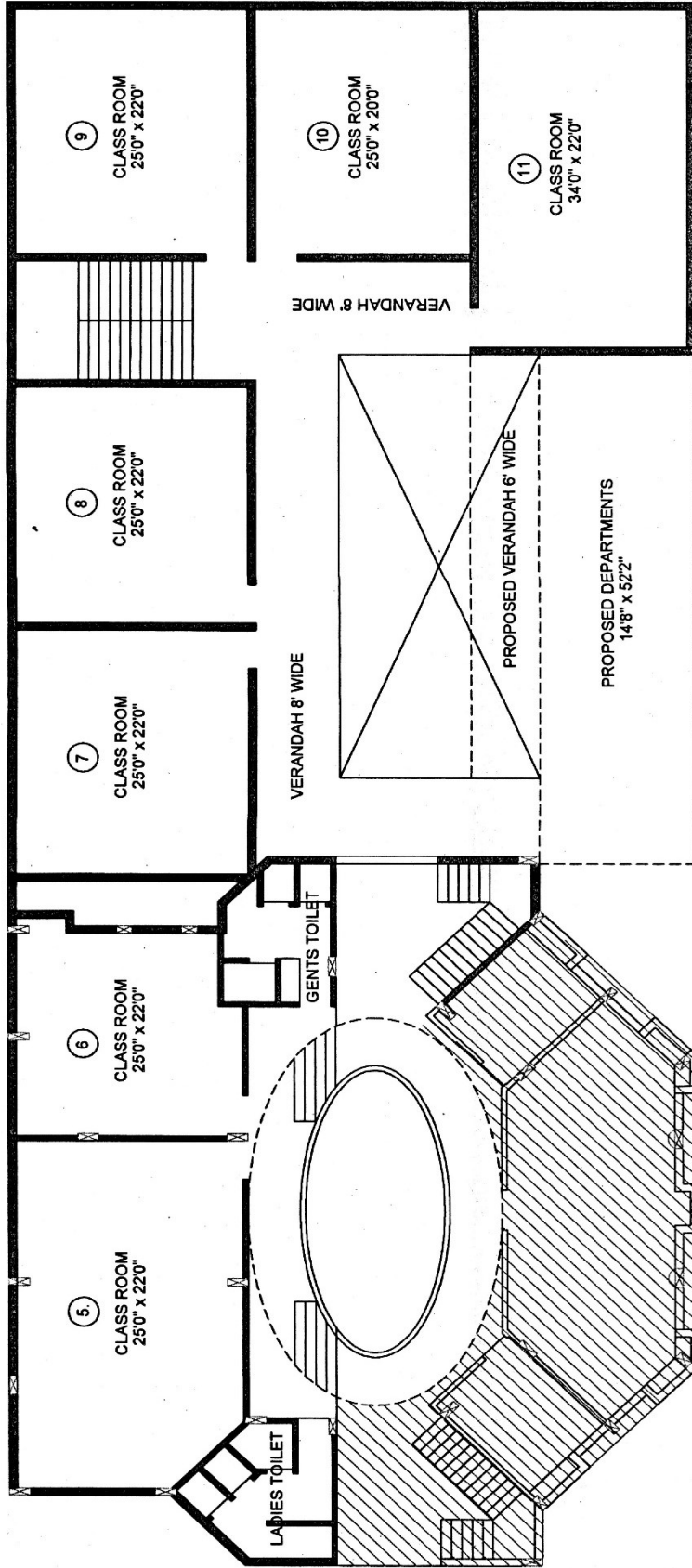
NO. OF CLASS ROOMS - 4
PROPOSED B.U.P AREA - 4121.66 SQ. FT

ENGINEER
PRAVIN D. PATREKAR
25 GURUKRUPA HSG. SOCIETY,
SHAHUNAGAR, SATARA.
PH: 9822000258



PROPOSED COLLEGE BUILDING
FOR RAYAT SHIKSHAN SANSTHA'S
SAVITRIBAI PHULE MAHILA MAHAVIDYALAYA
TAL & DIST. SATARA





FIRST FLOOR PLAN

NO. OF CLASS ROOMS - 7
 PROPOSED B.U.P. AREA [G.F.] - 4121.68 SQ. FT.
 PROPOSED B.U.P. AREA [F.F.] - 6442.95 SQ. FT.

PROPOSED COLLEGE BUILDING
 FOR RAYAT SHIKSHAN SANSTHA'S
 SAVITRIBAI PHULE MAHILA MAHAVIDYALAYA
 TAL & DIST. SATARA

ENGINEER

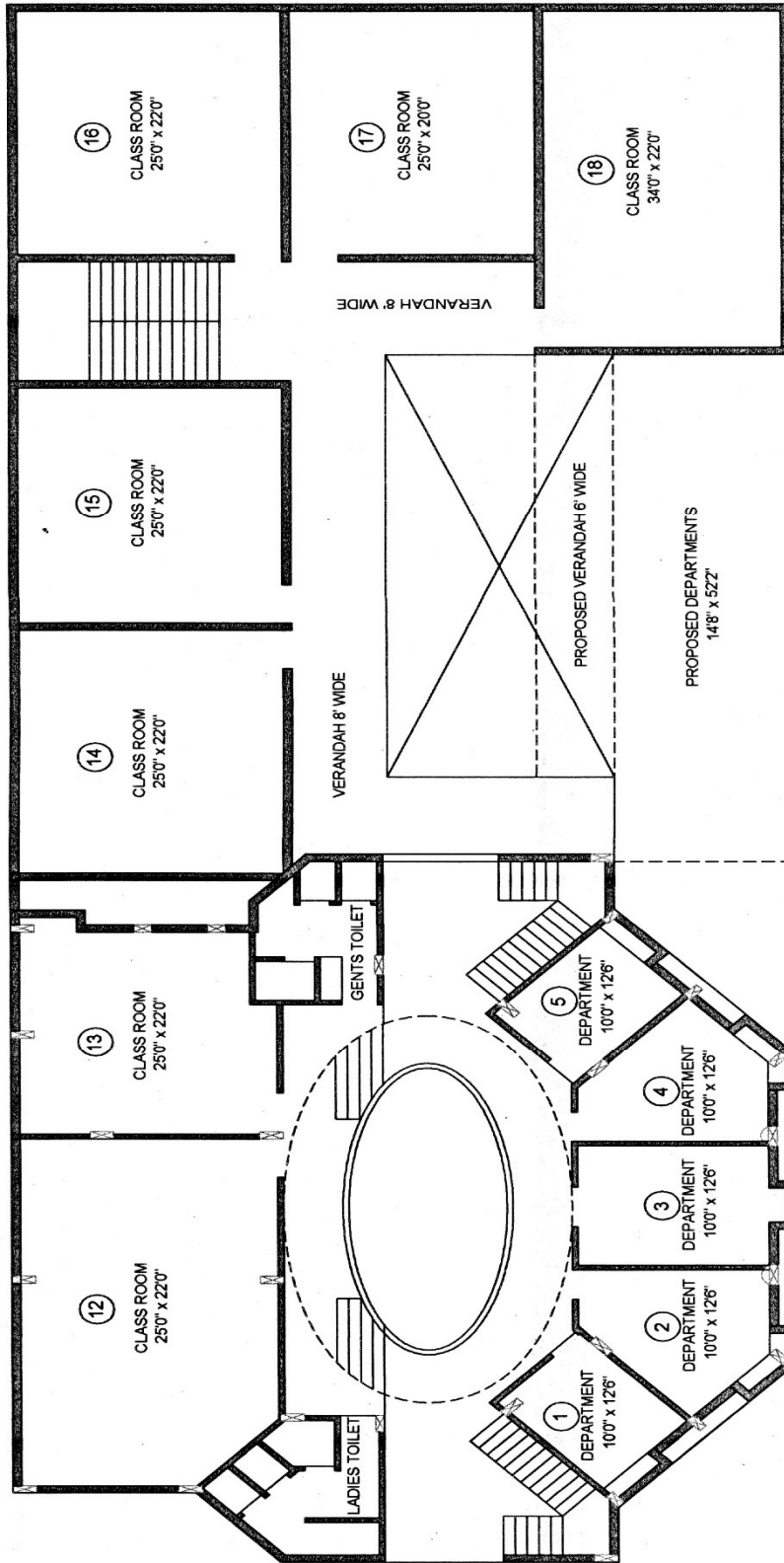
PRAVIN D. PATREKAR

25 GURUKRUPA HSG SOCIETY.

SHAHUNAGAR, SATARA.

PH: 9822000258





SECOND FLOOR PLAN

NO. OF CLASS ROOMS - 7	NO. OF DEPARTMENTS - 5
PROPOSED BUUP AREA - 7976 SQ. FT	PROPOSED BUUP AREA [G.F.] - 4121.68 SQ. FT
PROPOSED BUUP AREA [F.F.] - 6442.95 SQ. FT	PROPOSED BUUP AREA [S.F.] - 18540.61 SQ. FT
TOTAL NO OF DEPARTMENTS - 5	TOTAL NO OF ROOMS - 18

PROPOSED COLLEGE BUILDING
FOR RAYAT SHIKSHAN SANSTHA'S
SAVITRIBAI PHULE MAHILA MAHAVIDYALAYA

ENGINEER
PRAVIN D. PATREKAR
25 GURUKRUPA HSG. SOCIETY,
SHAHUNAGAR, SATARA.



Sprphale
IQAC
Co-ordinator

Pravin D. Patrekar
Principal
Savitribai Phule Mahila Mahavidyalaya
SATARA.



Floor Details with ICT Facilities

Sr. No.	Room No.	Name	Area in Sq. ft.	Capacity	Available Facilities and furniture
Ground Floor					
Gr.	G-1	Principal Cabin	476	10	LCD, Fan, CCTV, Sofa, Chair
	G-2	Administrative Office	486	05	Table, Chair, Cabinet, Fan, Computer, Xerox
	G-3	Conference Hall	480	25	LCD, Screen, CCTV, Speaker, Table, Chair
	G-4	Gents Toilet Blocks	156	---	----
	G-5	Library	616	---	Cupboards, Table, Chair, Computer, CCTV, Fan
		NRC Reading Room	66 374	05 40	
	G-6	Ladies Hostel		70 Student	--
	G-7	Savitri Consumer Store	108	--	Xerox Machine, Education Material
	G-8	NSS Office	110	05	NSS Administration
	G-9	NSS Store Room	110	--	Store Room for NSS Material
	G-10	Canteen	540	15	--
	G-11	Auditorium/ Art Circle / Cultural Hall	2565	250	LCD, Screen, Podium, Fan, Chair, Table, Sound System
	G-12	B. Voc. Lab.	756	50	Equipment for Nursing Practical
	G-13	Entrepreneurship Development Cell	110	5	----
	G-14	Cultural Department	110	5	Instruments and administration
First Floor					
1	F-1	IQAC Cell	144	05	IQAC Administration Computer, Printer
2	F-2	Commerce Tally Laboratory	480	30	LCD, Screen, Podium, White Board, Fan, CCTV, Speaker, Table, Chair
	F-3	Commerce Classroom	240	12	LCD, Podium, Fan, CCTV, Green Board, Chair
		Head Cabin	150		
	F-4	B.C.A. Computer	503	42	LCD, Screen, White Board,



		Laboratory			Fan, CCTV, Speaker, Table, Chair
	F-5	Classroom and Seminar Hall	972	51	LCD, Screen, Podium, Fan, Platform, White Board, CCTV, Speaker, Table, Chair
	F-6	Ladies Gym	2000	--	Gym Equipment, Mirror, Television, Fan, Yoga Mats. Changing Room.
		Toilet Blocks	209	---	---
2	S-1	Beauty & Wellness	144	10	Beauty Parlor Equipment
	S-2	English Classroom & Language Lab	486	6	LCD, Screen, Podium, Fan, Green Board, Table, Chair
	S-3	Economics Classroom	366	12	LCD, Podium, Fan, Green Board, Table, Chair, Cupboard
	S-4	Commerce IT Lab.	646	50	LCD, Screen, Podium, CCTV, Fan, Green Board, Table, Chair
	S-5	Classroom	490	25	LCD, Screen, Fan, White Board, Podium, Platform, CCTV, Green Board, Table, Chair
	S-6	Classroom	490	31	LCD, CCTV, Fan, Speaker, Green Board, Table, Chair
	S-7	Sociology Classroom	307	8	LCD, Podium, Fan, Green Board, Cupboard
	S-8	Examination Department	225	----	Computer, Printer, Xerox Machine, Fan, CCTV
	S-9	Fashion Design	315	---	12 Sewing Machine and other Material
	S-10	Common Ladies Room	219		
	S-11	Ladies Toilet Blocks	219	----	----
Third Floor					
3	T-1	BCA Office	144	15	Administration of BCA
	T-2	Classroom	480	30	LCD, Screen, Podium, Platform, Fan, CCTV, Green Board, Chair



T-3	Classroom	377	25	LCD, Screen, Podium, Fan, CCTV, Green Board, Chair
T-4	Classroom	511	38	LCD, Screen, Podium, Fan, CCTV, Green Board, Chair
T-5	Psychology Department	42		Computer, Table, Chair, Fan.
T-6	Hindi Classroom	150	7	LCD, Podium, Green Board, Table, Chair
	Head Cabin	91		Computer, Printer, Fan, Table, Chair, Cupboard
T-7	Marathi Classroom	157	8	LCD, Podium, Fan, Green Board, Table, Chair
	Head Cabin	89		Computer, Printer, Fan, Table, Chair, Cupboard
T-8	History Classroom	144	6	LCD, Podium, Fan, Green Board, Table, Chair
	Head Cabin	85		Computer, Printer, Fan, Table, Chair, Cupboard
T-9	Geography Classroom	232	16	LCD, Screen, Podium, Platform, Fan, CCTV, Green Board, Table, Chair
T-10	Nursing Classroom	365	29	LCD, White Board, Podium, Fan, Green Board, Chair.
T-11	Nursing Head Cabin	210	---	Administration of B. Voc. Nursing.
T-12	Reading Room	735	100	Table, Chair, Newspaper Stand, Book Cupboard
T-13	Staff Washrooms Gents	93	1	
T-14	Staff Washrooms Ladies	93	1	

Sapthakali
IQAC
Co-ordinator

Savitribai Phule
Principal
Savitribai Phule Mahila Mahavidyalaya
SATARA.

Ladies Hostel Facility



❖ Infrastructural details of the hostel*

Sr. No.	Details of facility	Quantity
1)	Total Rooms	35
2)	Intake capacity	70
3)	Bathrooms	09
4)	Sanitary Blocks	09
5)	Solar system	04
6)	A Multipurpose Hall	01
7)	Savitri Grahak Bhandar	01

❖ Facility provided in the hostel

Sr. No.	Facility	Details
1)	Recreational facility	Gymnasium hall & yoga training, Television.
2)	Health care & Medical	Dr. Aditi Jadhav is appointed as visiting doctor/ available on Call.
3)	Library	Newspapers, Magazines & books are provided to the girls of hostel.
4)	Water purifier & water cooler	Pure drinking water.
5)	In house Mess	Tea, Breakfast and meals made available in the hostel
6)	Sanitary Napkin vending machine (In WC of college)	Vend the sanitary napkins to the girl students
7)	Security	Residential rector and provision of CCTV 24 hour and watchmen in the campus.
8)	LED TV 42"	For getting knowledge and entertainment information.


IQAC
Co-ordinator


Principal
Savitribai Phule Mahila Mahavidyalaya
SATARA.

College Building



Sprphale
IQAC
Co-ordinator

Savitribai Phule
Principal
Savitribai Phule Mahila Mahavidyalaya
SATARA.

Rayat Mauali Sou. Laxmibai Bhaurao Patil Girls Hostel



Internal Structure of Hostel



Library



Supplu
IQAC
Co-ordinator

Savitribai Phule
Principal
Savitribai Phule Mahila Mahavidyalaya
SATARA.



Laboratories



List of Laboratories

Sr. No.	Hall No.	Particular	Area in sq. ft.
1	G-5	Computer Lab (NRC, Library)	66
2	G-12	B. Voc. Nursing Lab	342
3	F-2	Commerce Computer Lab.	480
4	F-4	BCA Computer Lab	503
5	S-2	Language Lab.	247
6	S-4	Commerce IT Lab.	646
7	T-7	Geography Lab	100

S. Phule
IQAC
Co-ordinator

S. Phule
Principal
Savitribai Phule Mahila Mahavidyalaya
SATARA.

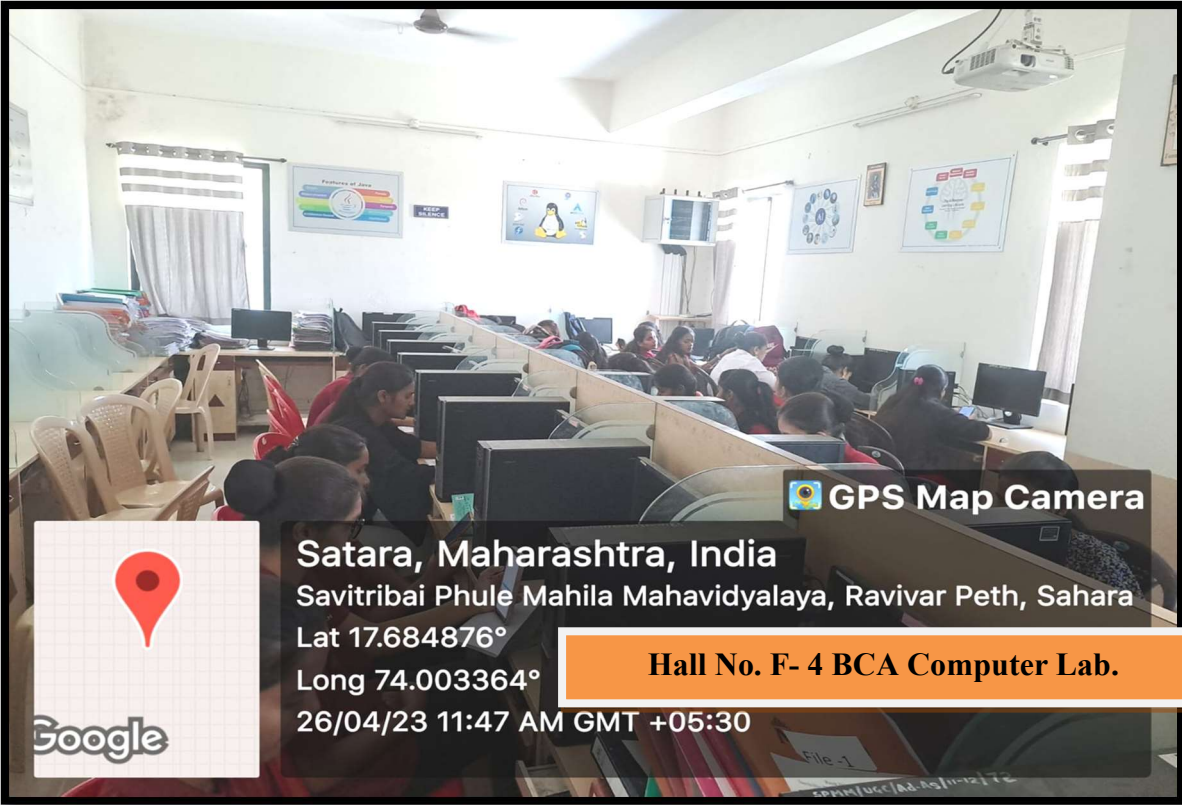
Laboratories



GPS Map Camera

Satara, Maharashtra, India
 Savitribai Phule Mahila Mahavidyalaya , Raviwar Peth, Powai Naka, M2M3+X9F, kesarkar peth, Guruwar Peth, Satara, Maharashtra 415001, India
 Lat 17.713639°
 Long 73.997621°
 07/02/23 12:4

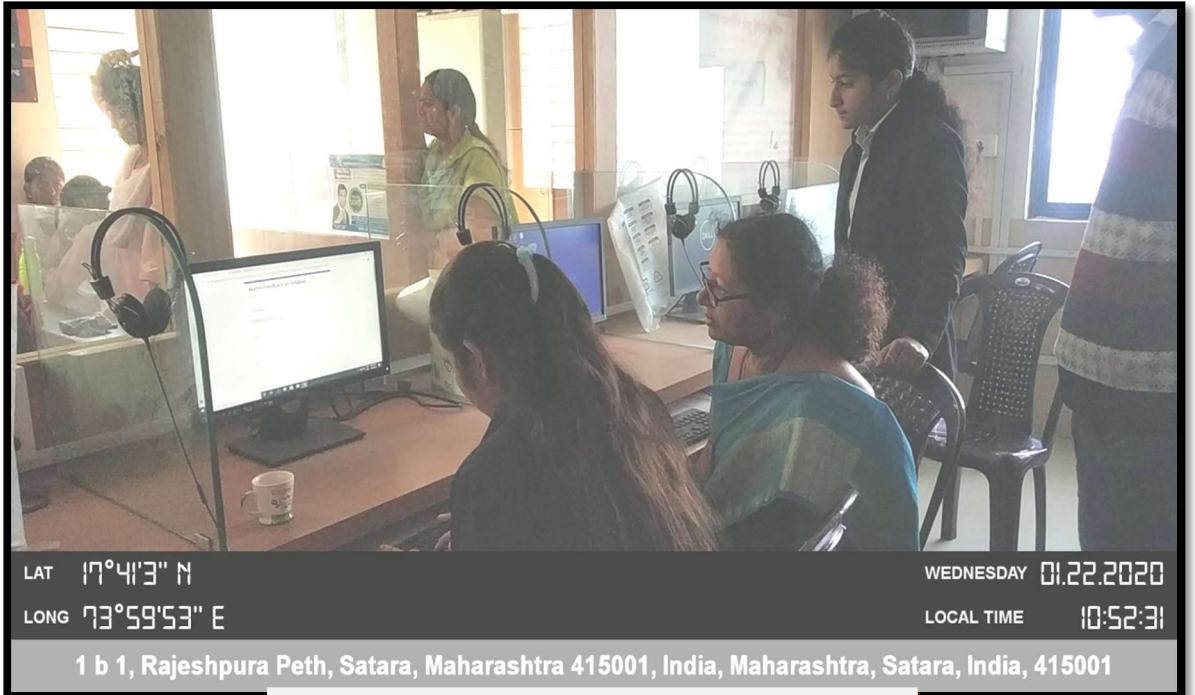
Hall No. F-2 Commerce Computer Lab.



GPS Map Camera

Satara, Maharashtra, India
 Savitribai Phule Mahila Mahavidyalaya, Ravivar Peth, Sahara
 Lat 17.684876°
 Long 74.003364°
 26/04/23 11:47 AM GMT +05:30

Hall No. F- 4 BCA Computer Lab.



LAT 17°41'3" N
LONG 73°59'53" E

WEDNESDAY 01.22.2020
LOCAL TIME 10:52:31

1 b 1, Rajeshpura Peth, Satara, Maharashtra 415001, India, Maharashtra, Satara, India, 415001

Hall No. S-2 Language Lab.



Hall No. S-4 Commerce IT Lab.



Hall No. G-12 Nursing Lab.

Sprphale
IQAC
 Co-ordinator

Savitribai Phule
Principal
 Savitribai Phule Mahila Mahavidyalaya
 SATARA.