



Rayat Shikshan Sanstha's
Savitribai Phule Mahila Mahavidyalaya, Satara



INTERNAL QUALITY ASSURANCE CELL

**Student Satisfaction Survey
(SSS)**

Academic Year: 2024-25

Student Satisfaction Survey (SSS)

ON OVERALL INSTITUTIONAL PERFORMANCE

According to the recent Student Satisfaction Survey (SSS), the institution continues to develop high standards of academic excellence and student support. The analysis reflects strong positive feedback from the student's about multiple dimensions of institutional performance.

Academic Coverage and Teacher Effectiveness

An impressive 85–90% of the syllabus was completed, ensuring comprehensive academic coverage and effective student preparedness. The clarity and effectiveness of teachers' communication skills are appreciated by 84% students.

The teaching approach has been highly rated, with 61% of students marking it as "Excellent" and 30% as "Very Good," highlighting the faculty's dedication to innovative and student-centric methodologies.

Internal Evaluation and Feedback

78% of students Satisfied with internal evaluation processes are conducted fairly and transparently. Additionally, 82% of students report that their performance in assignments is regularly discussed, promoting constructive feedback and continuous academic improvement.

Learning Opportunities and Student Development

The institution has strengthened experiential learning opportunities, with over 85% of students expressing satisfaction with internships, faculty exchange programs, field visits and other Extra Curricular activities such as trade fairs, project exhibitions, workshops, and guest lectures further enhance practical exposure and employability skills.

The Support systems like the Mentor-Mentee Scheme and Socio-Psycho Cell continue to play a vital role in student development, the 78% Students are Participated in these activities actively regular engagement.

Teaching Quality and Student Satisfaction according to the student satisfaction survey students are appreciated the faculty about teaching and Learning Process. The above 88% of students are satisfied with the quality of teaching. The maximum students are praised about utilization of various methods in teaching learning process. 94% acknowledge the institution's efforts in delivering effective teaching-learning experiences

The more students are confirmed the active encouragement and participation in extracurricular activities such as filed visit, Placement Drive, These figures are indicated a strong alignment between teaching practices and student expectations. The Overall teaching quality remains highly appreciated by students

ICT Integration and Infrastructure

The institution has made notable progress in integrating technology, with around 65% of teachers using ICT tools such as LCD projectors, multimedia resources, and online platforms. The institution Provided 20 Smarts boards for effective teaching learning process.

The aim of management is to further expand ICT adoption to enhance teaching effectiveness and digital learning experiences.

Facilities and Support Services

The institution also provided various support services for overall development of students. Such as NSS, Sports, Cultural etc. More than 92% of students are expressed satisfaction with campus facilities, including libraries, laboratories, internet connectivity, CCTV, Water Purify, Competitive exam guidance, Toilets, Sanitary facilities parking, etc. The students would be provided Enhance canteen facilities as per student's suggestions. More needy students would be given earn and learn scheme

- Additional hostel accommodations
- More career-oriented courses

The institution is committed to addressing these suggestions to create a more student-friendly environment.

Overall analysis:

The maximum student are satisfied in student's satisfaction Survey. They are reflecting strong confidence in both academic and non-academic aspects of the institution.

Future plan in various areas include:

- Strengthening the Mentor-Mentee system
- Increasing ICT integration
- Expanding internships, field visits, and project-based learning
- Enhancing continuous feedback mechanisms
- organize various conference / seminars/workshops

The institution demonstrates a sustained commitment to quality education, holistic student development, and continuous improvement. The overwhelmingly positive student feedback serves as both validation and motivation to further enhance the learning environment and support system.


IQAC
Co-ordinator


Principal
Savitribai Phule Mahila Mahavidyalaya
SATARA.





Rayat Shikshan Sanstha's
Savitribai Phule Mahila Mahavidyalaya, Satara
Student Satisfaction Survey (SSS)
 Academic Year -2024-25

Q. No.	Points	Response				
1	How much of the syllabus was covered in the class?	85 to 100%	70 to 84%	55 to 69%	30 to 54%	Below 30%
		456	118	17	02	00
2	How well did the teachers prepare for the classes?	Thoroughly	Satisfactorily	Poorly	Indifferently	Won't teach at all
		263	274	35	10	11
3	How well were the teachers able to communicate?	Always effective	Sometimes effective	Just satisfactorily	Generally ineffective	Very poor communication
		437	119	24	07	06
4	The teacher's approach to teaching can best be described as	Excellent	Very Good	Good	Fair	Poor
		279	233	76	04	01
5	Fairness of the internal evaluation process by the teachers.	Always fair	Usually fair	Sometimes unfair	Usually unfair	Unfair
		417	137	29	08	02

6	Was your performance in assignments discussed with you?	Every time	Usually	Occasionally/Sometimes	Rarely	Never
		442	103	30	13	05
7	The institute takes active interest in promoting internship, student exchange, field visit opportunities for students.	Regularly	Often	Sometimes	Rarely	Never
		313	130	109	29	12
8	The teaching and mentoring process in your institution facilitates you in cognitive, social and emotional growth.	Significantly	Very well	Moderately	Marginally	Not at all
		257	297	32	04	03
9	The institution provides multiple opportunities to learn and grow.	Strongly Agree	Agree	Neutral	Disagree	Strongly Disagree
		300	234	47	08	04
10	Teachers inform you about your expected competencies, course outcomes and programme outcomes	Every time	Usually	Occasionally/Sometimes	Rarely	Never
		394	161	20	13	05
11	Your mentor does a necessary follow-up with an assigned task to you.	Every time	Usually	Occasionally/Sometimes	Rarely	I don't have a mentor
		395	136	46	13	03
12	The teachers illustrate the concepts through examples and applications.	Every time	Usually	Occasionally/Sometimes	Rarely	Never
		401	136	35	19	02

13	The teachers identify your strengths and encourage you with providing right level of challenges.	Fully	Reasonably	Partially	Slightly	Unable to
		393	150	39	09	02
14	Teachers are able to identify your weaknesses and help you to overcome them.	Every time	Usually	Occasionally/Sometimes	Rarely	Never
		406	134	37	13	03
15	The institution makes effort to engage students in the monitoring, review and continuous quality improvement of the teaching learning process	Strongly Agree	Agree	Neutral	Disagree	Strongly Disagree
		316	218	47	08	04
16	The institute/ teachers use student centric methods, such as experiential learning, participative learning and problem solving methodologies for enhancing learning experiences.	To a great extent	Moderate	Somewhat	Very little	Not at all
		373	168	32	16	04
17	Teachers encourage you to participate in extracurricular activities.	Strongly Agree	Agree	Neutral	Disagree	Strongly Disagree
		343	208	28	09	05
18	Efforts are made by the institute/ teachers to inculcate soft skills, life skills and employability skills to make you ready for the world of work.	To a great extent	Moderate	Somewhat	Very little	Not at all
		354	177	35	22	05

19	What percentage of teachers use ICT tools such as LCD projector, Multimedia, etc. while teaching.	Above 90%	70 – 89%	50 – 69%	30 – 49%	Below 29%
		356	184	34	12	07
20	The overall quality of teaching-learning process in your institute is very good.	Strongly Agree	Agree	Neutral	Disagree	Strongly Disagree
		347	207	29	08	02

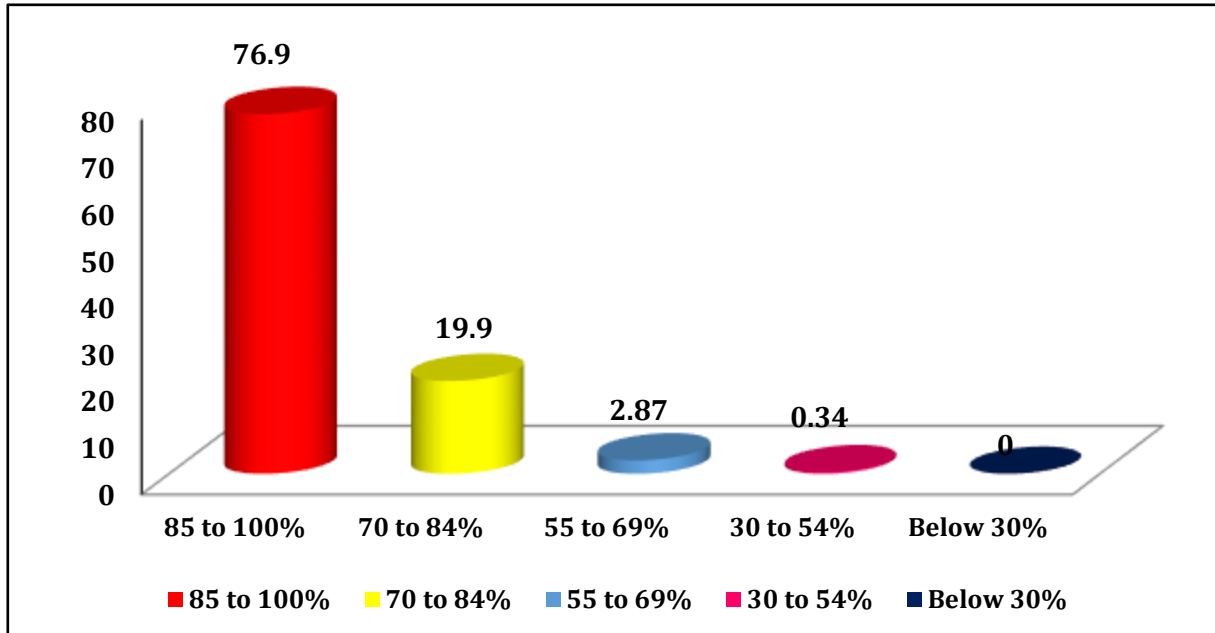
Question No.	Points	Response in %				
1	How much of the syllabus was covered in the class?	85 to 100%	70 to 84%	55 to 69%	30 to 54%	Below 30%
		76.90	19.90	2.87	0.34	0.00
2	How well did the teachers prepare for the classes?	Thoroughly	Satisfactorily	Poorly	Indifferently	Won't teach at all
		44.35	46.21	5.90	1.69	1.85
3	How well were the teachers able to communicate?	Always effective	Sometimes effective	Just satisfactorily	Generally ineffective	Very poor communication
		73.69	20.07	4.05	1.18	1.01
4	The teacher's approach to teaching can best be described as	Excellent	Very Good	Good	Fair	Poor
		47.05	39.29	12.82	0.67	0.17
5	Fairness of the internal evaluation process by the teachers.	Always fair	Usually fair	Sometimes unfair	Usually unfair	Unfair
		70.32	23.10	4.89	1.35	0.34

6	Was your performance in assignments discussed with you?	Every time	Usually	Occasionally/ Sometimes	Rarely	Never
		74.54	17.37	5.06	2.19	0.84
7	The institute takes active interest in promoting internship, student exchange,	Regularly	Often	Sometimes	Rarely	Never
		52.78	21.92	18.38	4.89	2.02
8	The teaching and mentoring process in your institution facilitates you in cognitive, social and emotional growth.	Significantly	Very well	Moderately	Marginally	Not at all
		43.34	50.08	5.40	0.67	0.51
9	The institution provides multiple opportunities to learn and grow.	Strongly Agree	Agree	Neutral	Disagree	Strongly Disagree
		50.59	39.46	7.93	1.35	0.67
10	Teachers inform you about your expected competencies, course outcomes and programme outcomes	Every time	Usually	Occasionally/ Sometimes	Rarely	Never
		66.44	27.15	3.37	2.19	0.84
11	Your mentor does a necessary follow-up with an assigned task to you.	Every time	Usually	Occasionally/ Sometimes	Rarely	I don't have a mentor
		66.61	22.93	7.76	2.19	0.51
12	The teachers illustrate the concepts through examples and applications.	Every time	Usually	Occasionally/ Sometimes	Rarely	Never
		67.62	22.93	5.90	3.20	0.34
13	The teachers identify your strengths and encourage you with providing right level of challenges.	Fully	Reasonably	Partially	Slightly	Unable to
		66.27	25.30	6.58	1.52	0.34

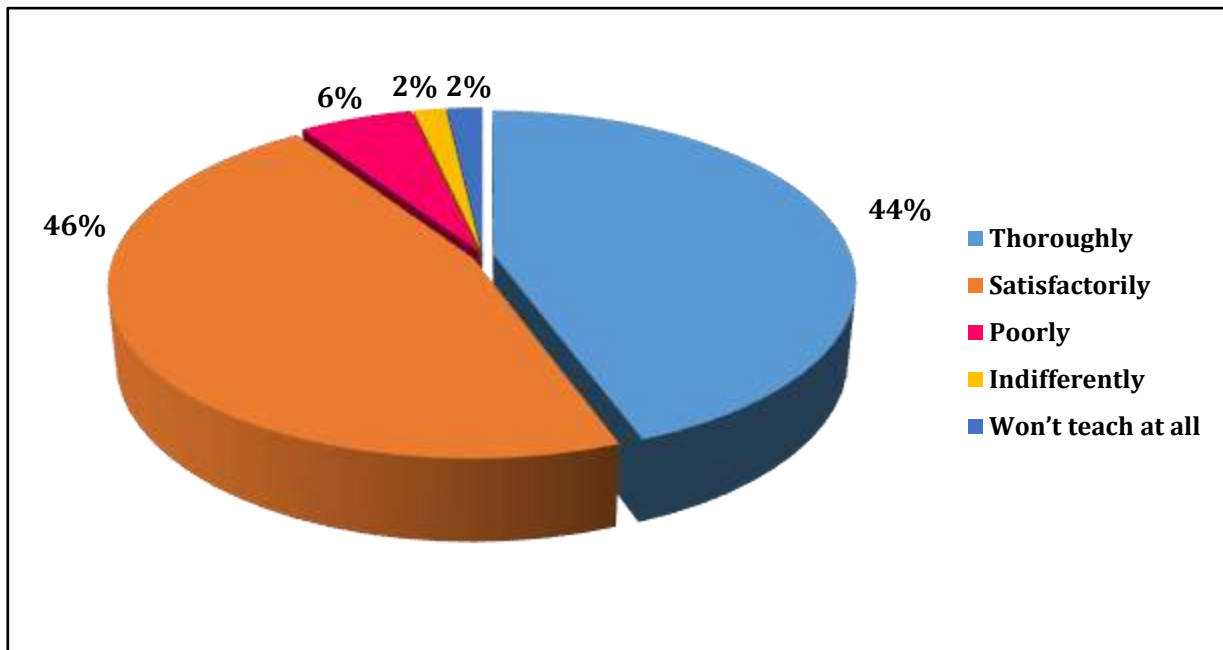
14	Teachers are able to identify your weaknesses and help you to overcome them.	Every time	Usually	Occasionally/ Sometimes	Rarely	Never
		68.47	22.60	6.24	2.19	0.51
15	The institution makes effort to engage students in the monitoring,	Strongly Agree	Agree	Neutral	Disagree	Strongly Disagree
		53.29	36.76	7.93	1.35	0.67
16	The institute/ teachers use student centric methods, such as experiential learning,	To a great extent	Moderate	Somewhat	Very little	Not at all
		62.90	28.33	5.40	2.70	0.67
17	Teachers encourage you to participate in extracurricular activities.	Strongly Agree	Agree	Neutral	Disagree	Strongly Disagree
		57.84	35.08	4.72	1.52	0.84
18	Efforts are made by the institute/ teachers to inculcate soft skills	To a great extent	Moderate	Somewhat	Very little	Not at all
		59.70	29.85	5.90	3.71	0.84
19	What percentage of teachers use ICT tools such as LCD projector, Multimedia, etc. while teaching.	Above 90%	70 – 89%	50 – 69%	30 – 49%	Below 29%
		60.03	31.03	5.73	2.02	1.18
20	The overall quality of teaching-learning process in your institute is very good.	Strongly Agree	Agree	Neutral	Disagree	Strongly Disagree
		58.52	34.91	4.89	1.35	0.34

Graphical Presentation

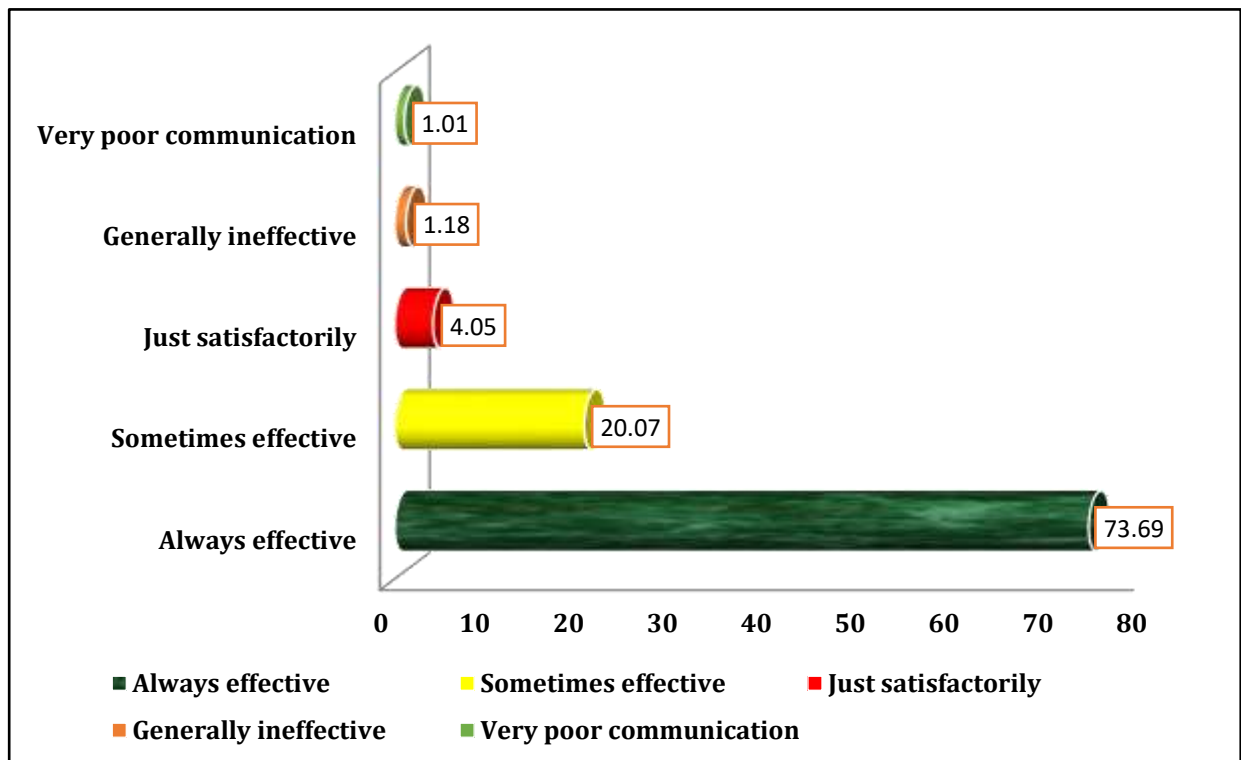
1. How much of the syllabus was covered in the class?



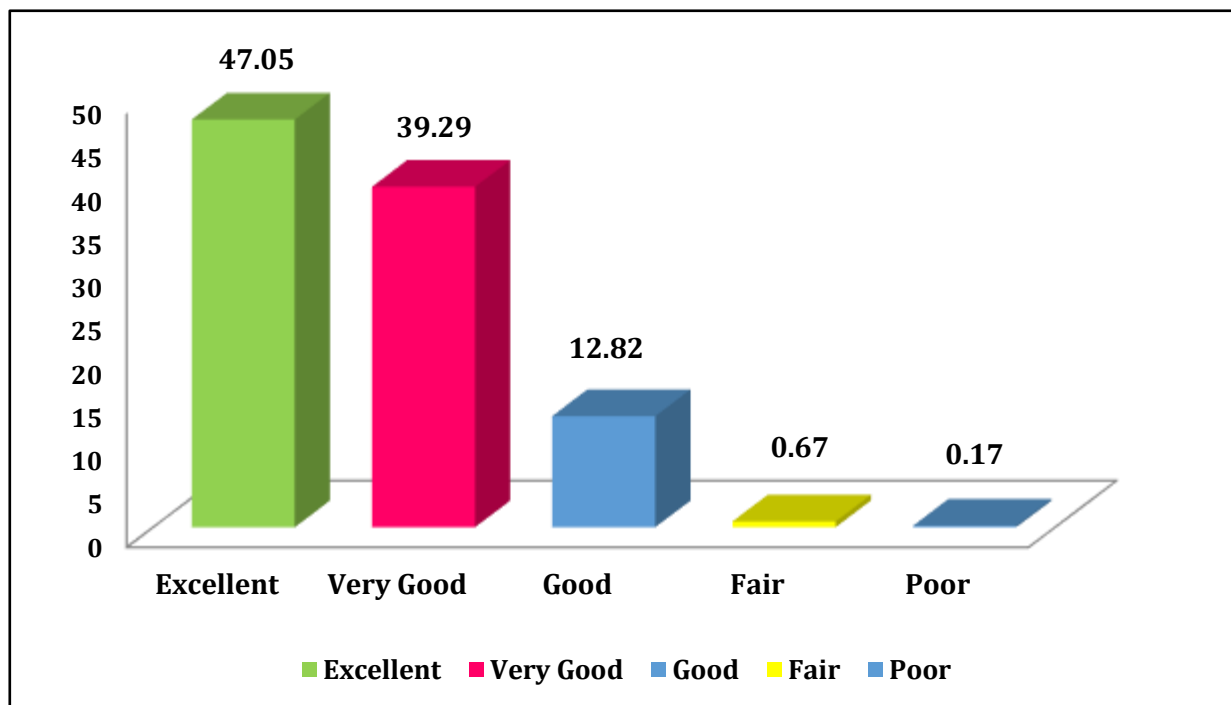
2. How well did the teachers prepare for the classes?



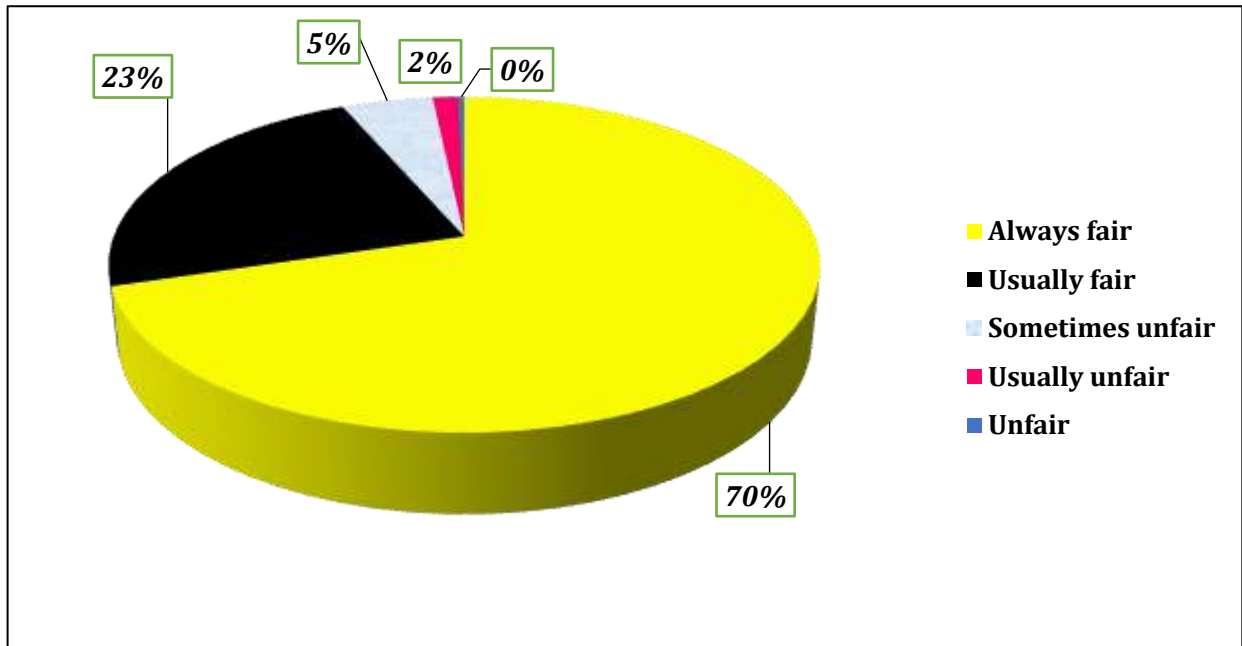
3.How well were the teachers able to communicate?



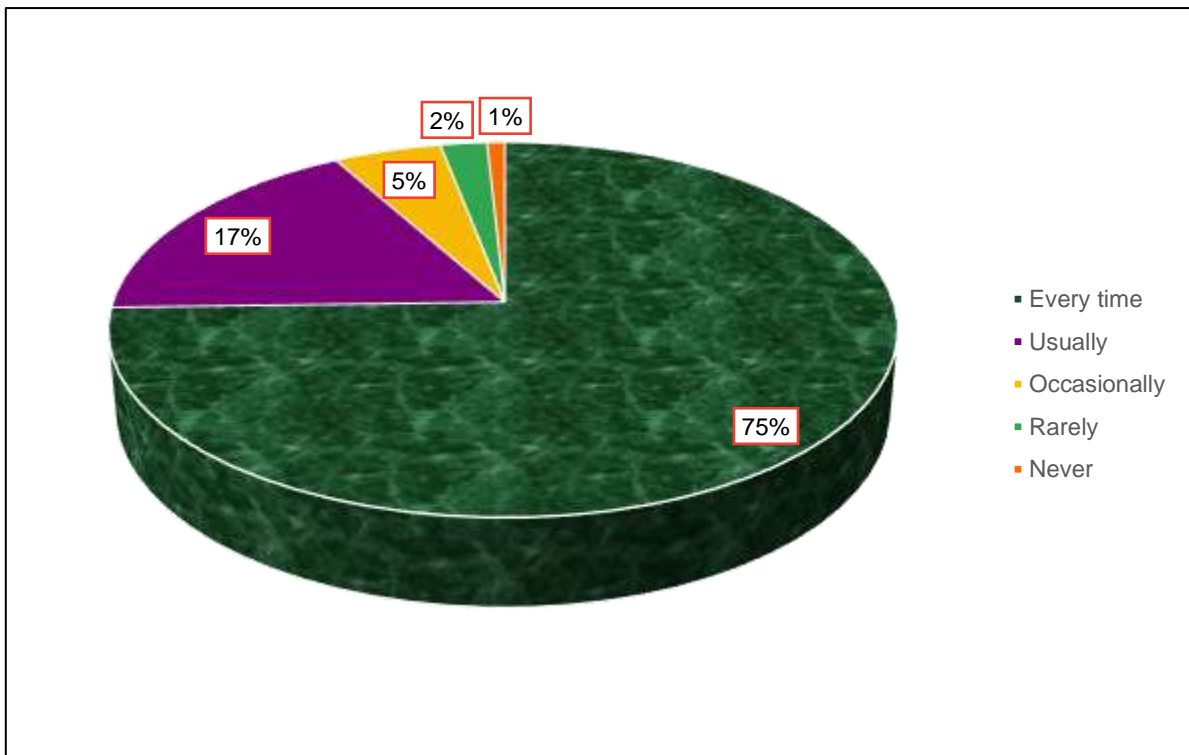
4.The teacher's approach to teaching can best be described as



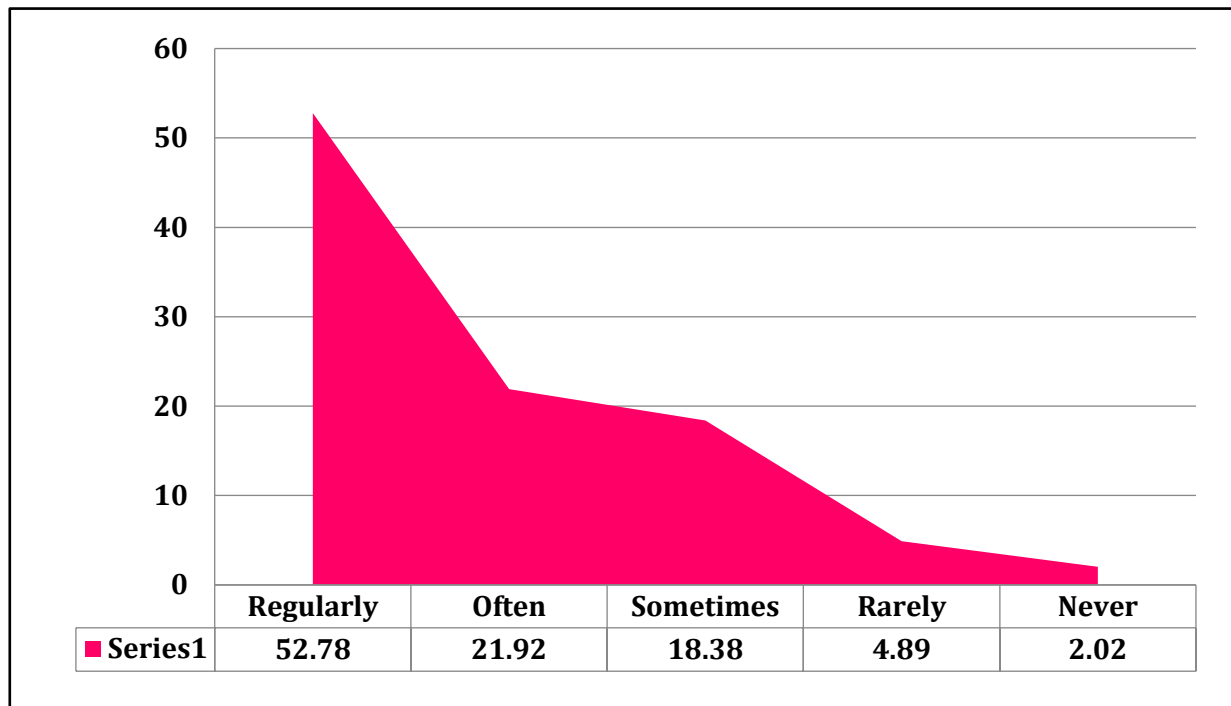
5. Fairness of the internal evaluation process by the teachers.



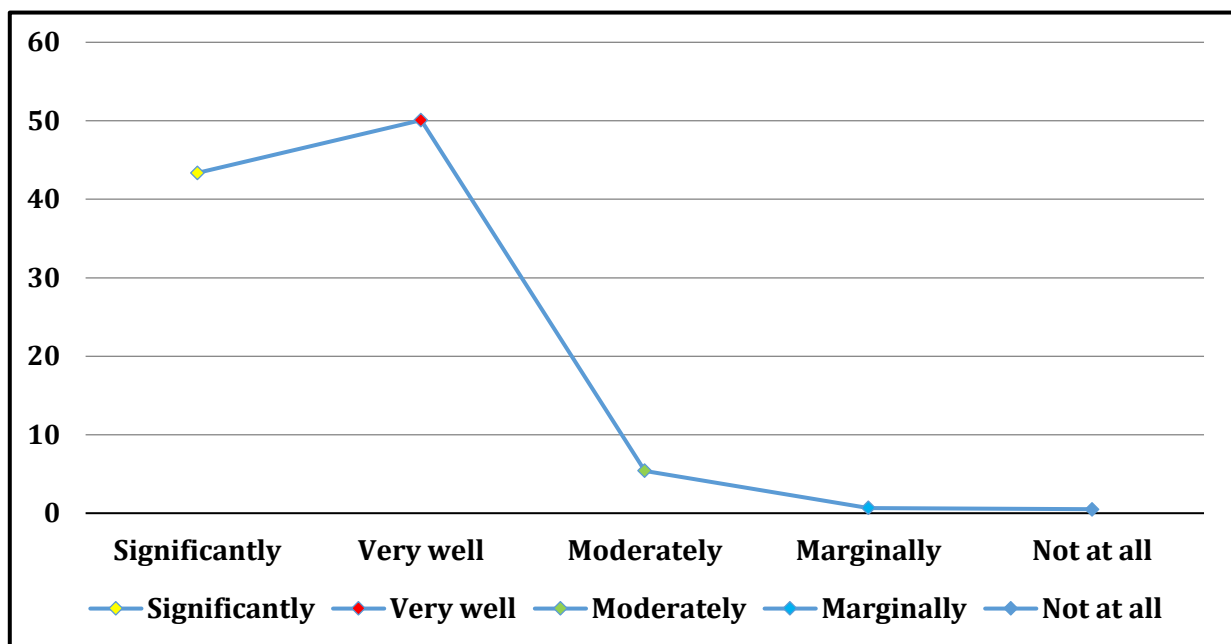
6. Was your performance in assignments discussed with you?



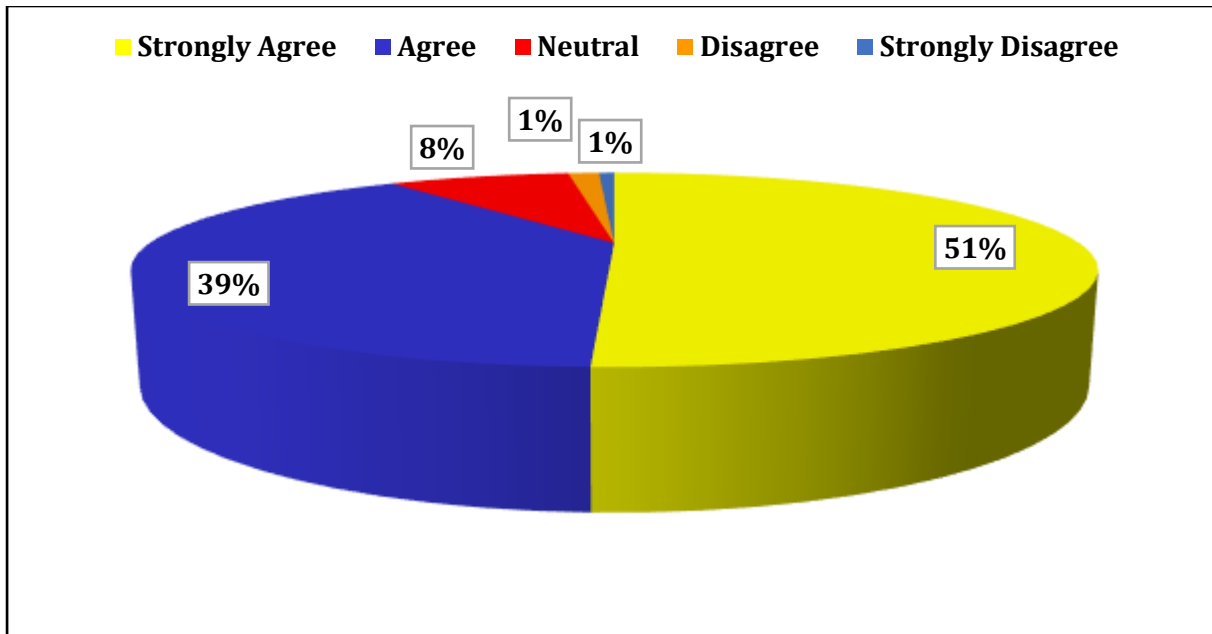
7. The institute takes active interest in promoting internship, student exchange, and field visit Opportunities for students.



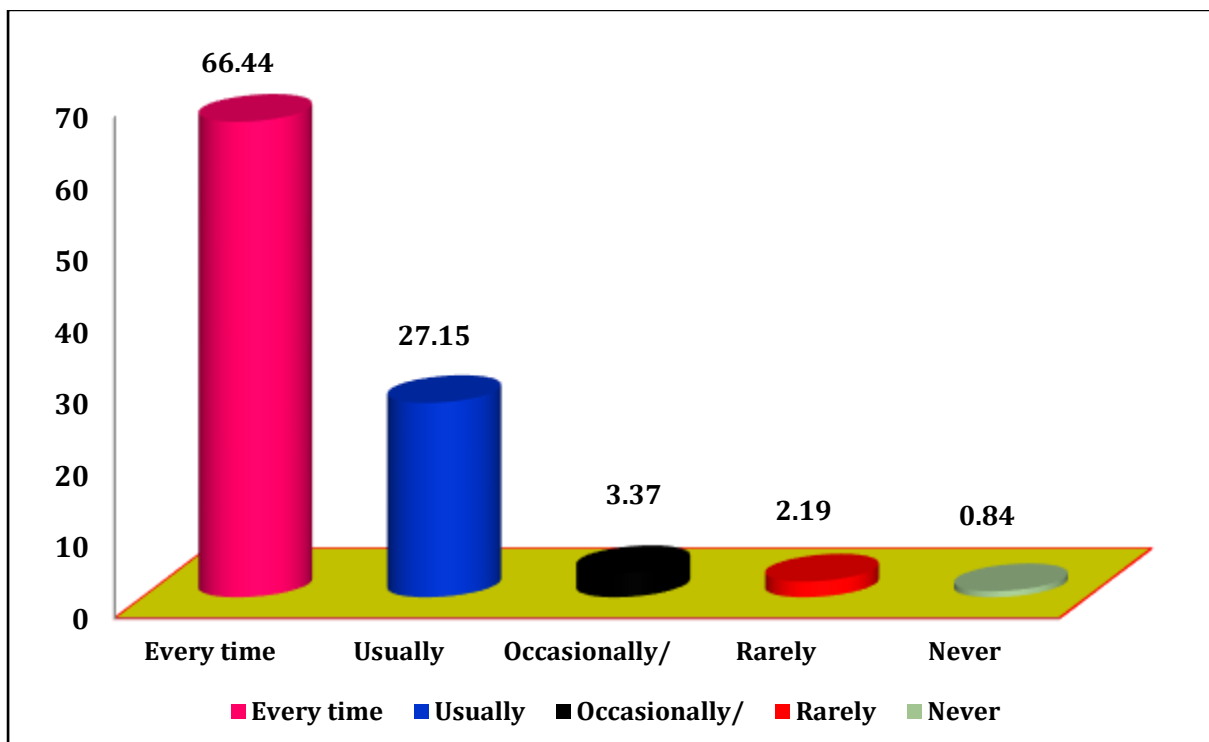
8. The teaching and mentoring process in your institution facilitates you in cognitive, social and emotional growth.



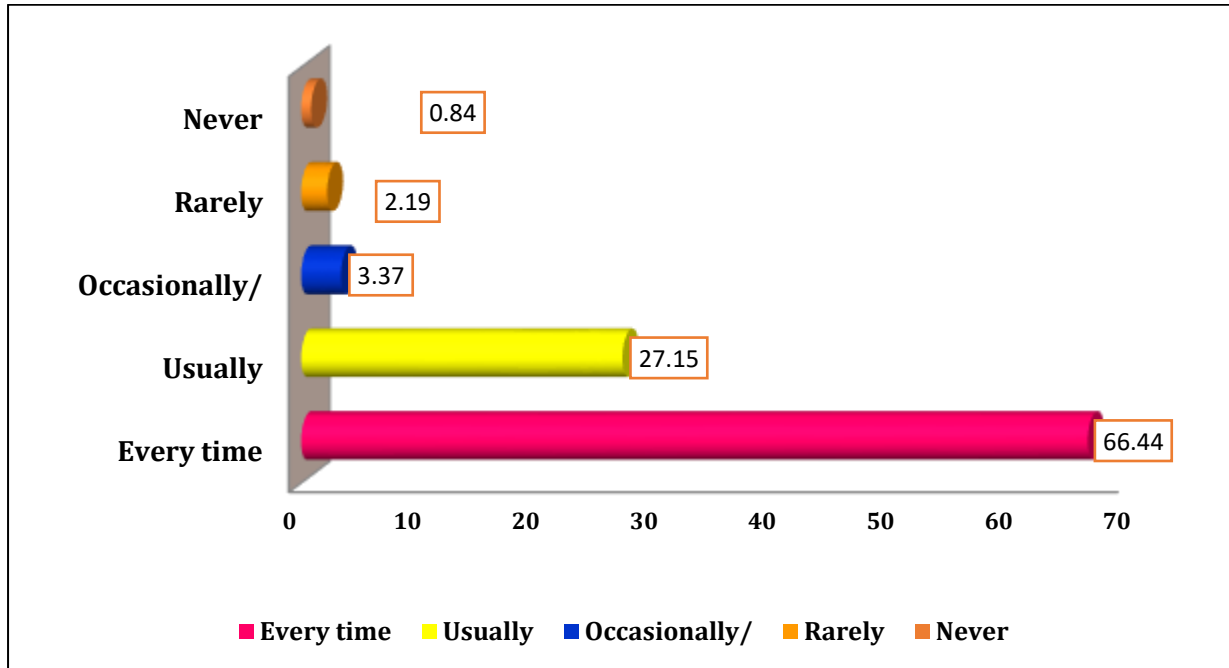
9. The institution provides multiple opportunities to learn and grow.



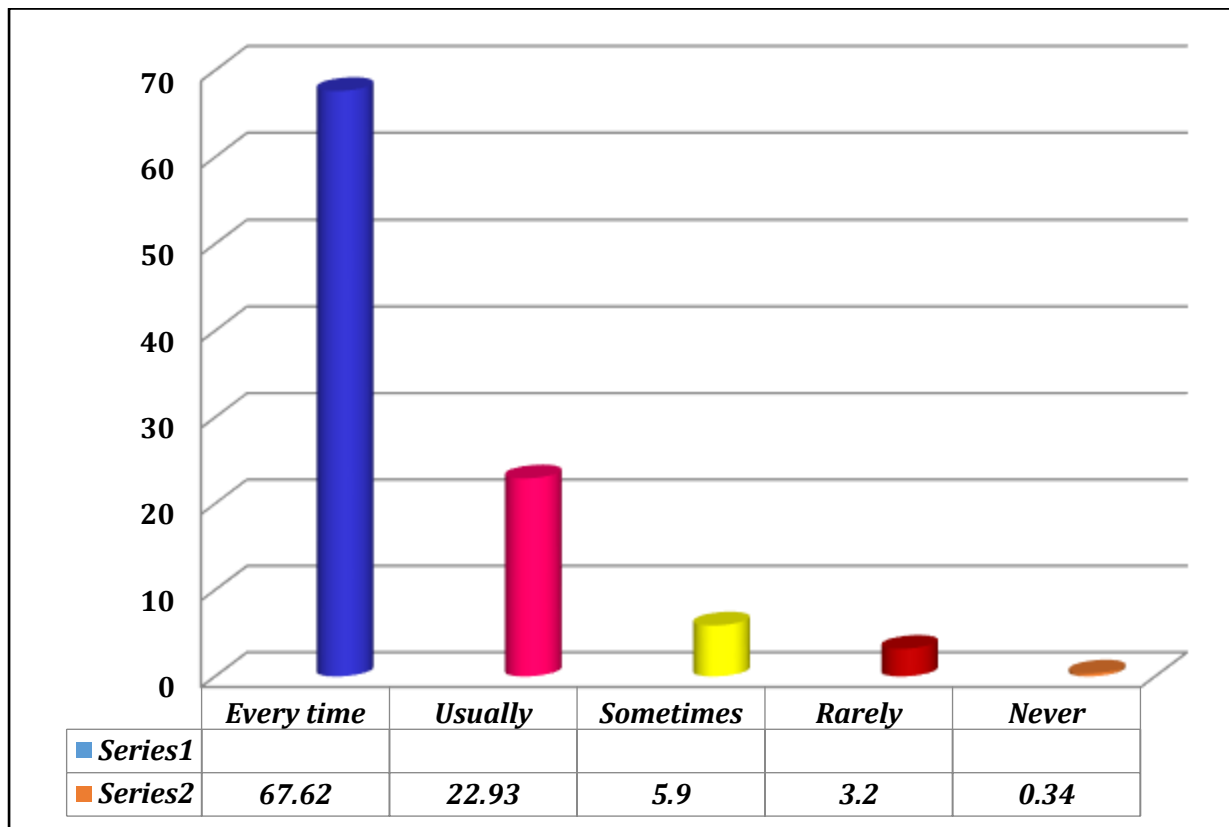
10. Teachers inform you about your expected competencies, course outcomes and programme outcomes



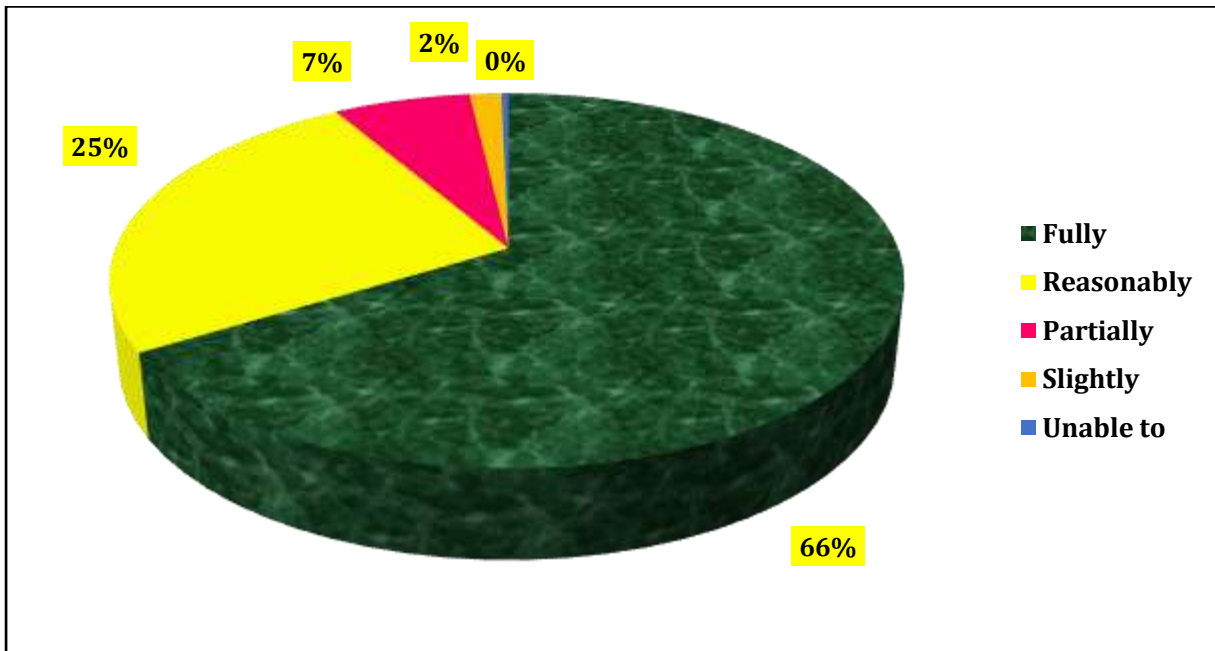
11. Your mentor does a necessary follow-up with an assigned task to you.



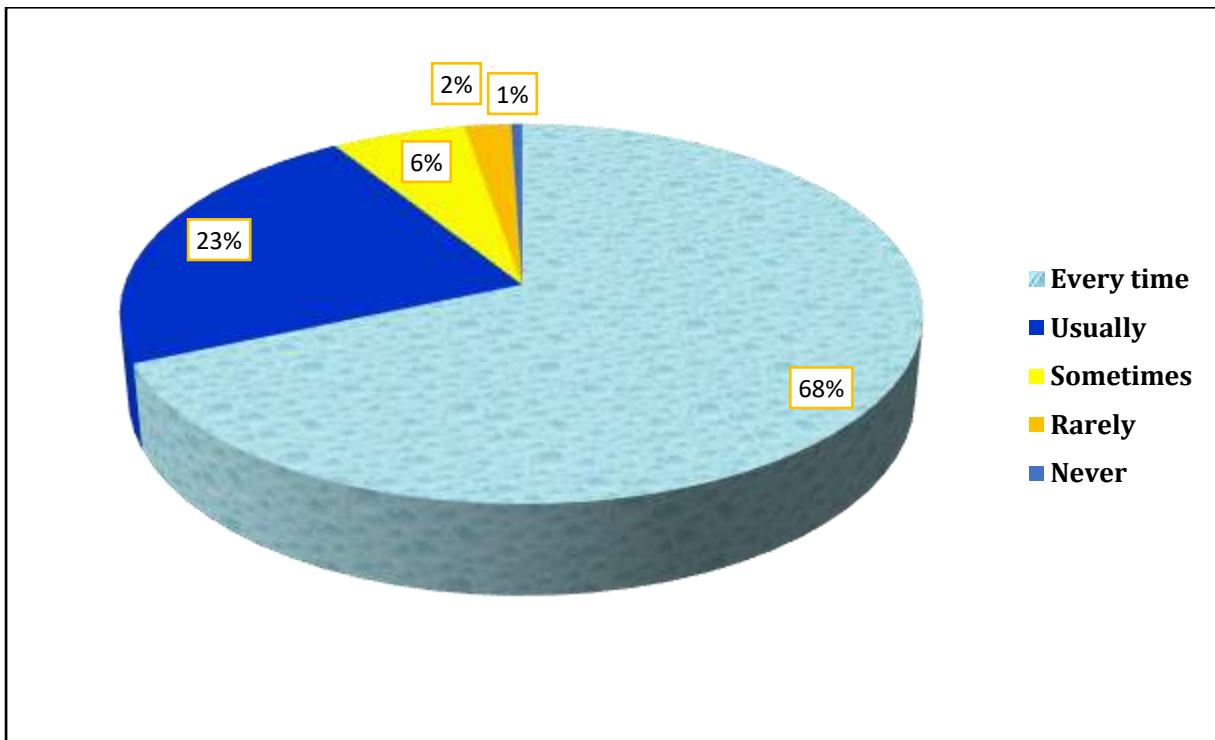
12. The teachers illustrate the concepts through examples and applications.



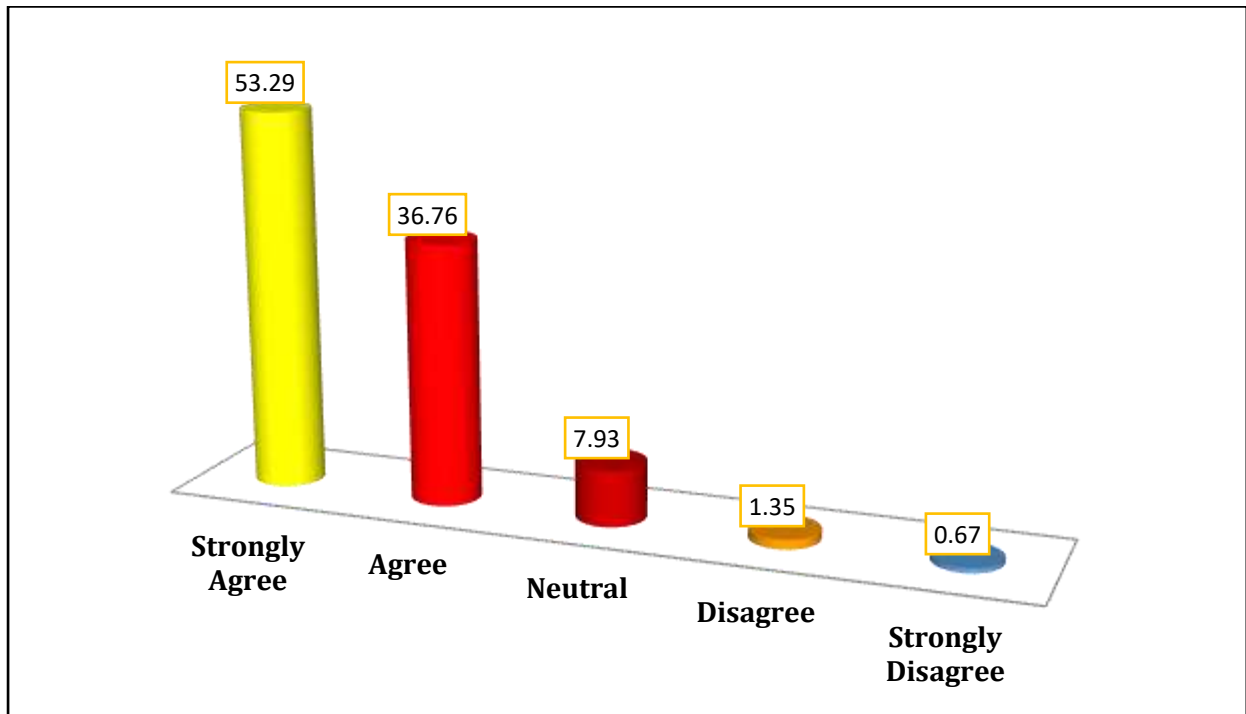
13.The teachers identify your strengths and encourage you with providing right level of challenges



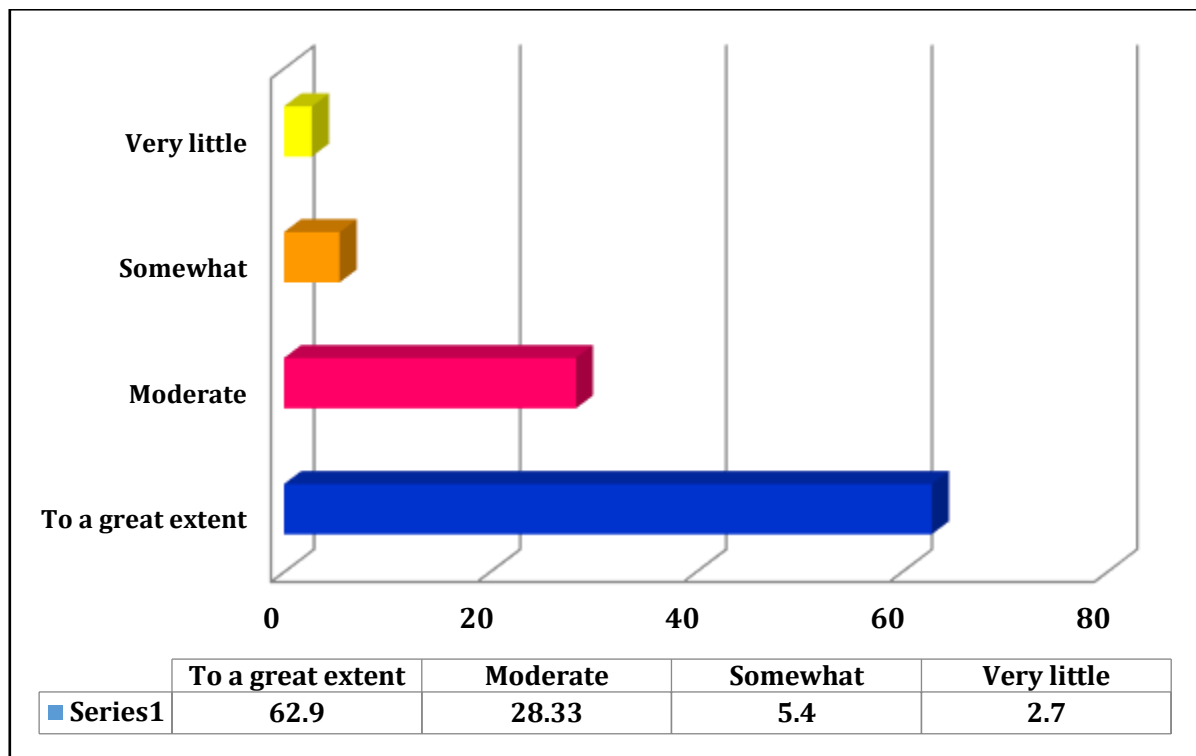
14.Teachers are able to identify your weaknesses and help you to overcome them.



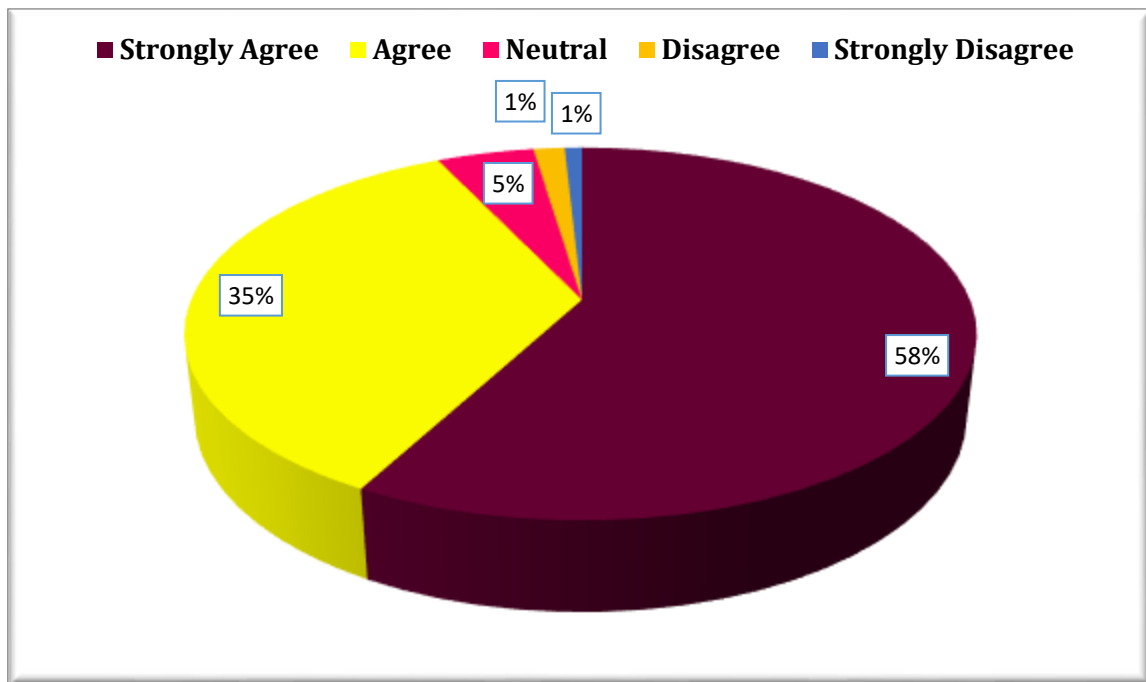
15. The institution makes effort to engage students in the monitoring, review and continuous quality improvement of the teaching learning process



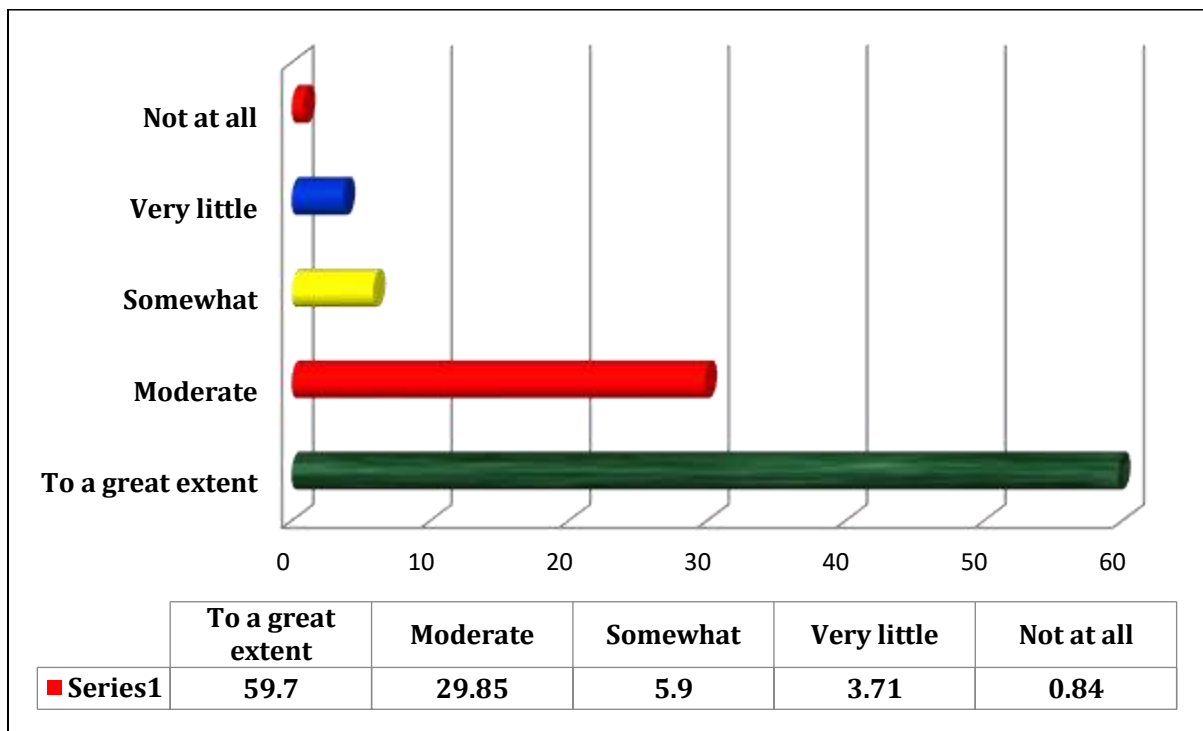
16. The institute/ teachers use student centric methods, such as experiential Learning, participative Learning and problem solving methodologies for Enhancing learning experiences.



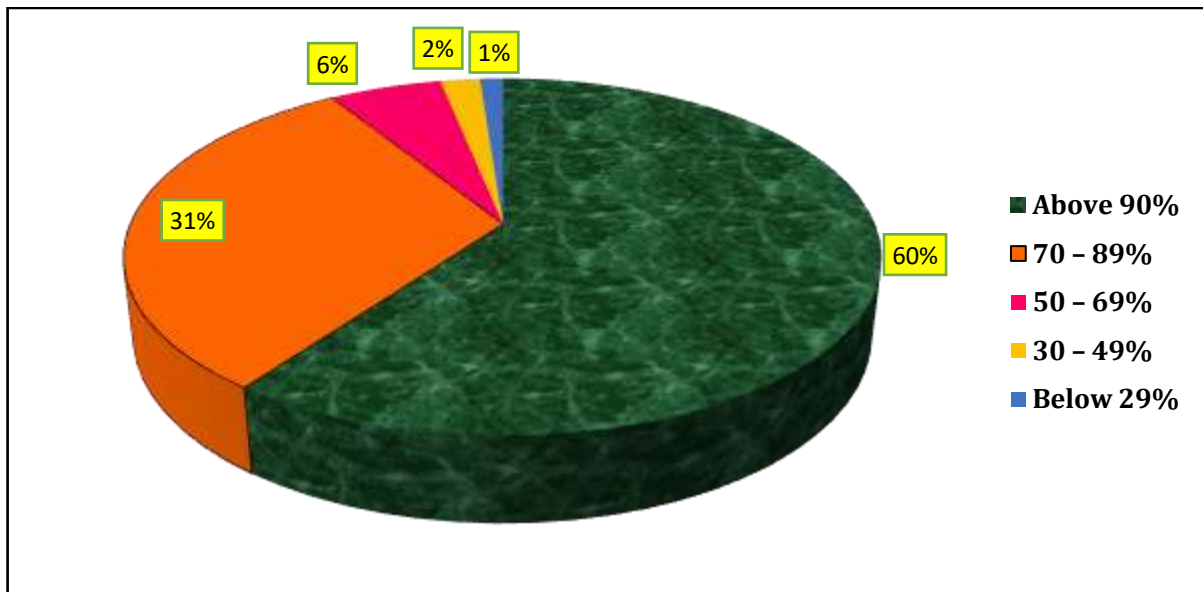
17. Teachers encourage you to participate in extracurricular activities.



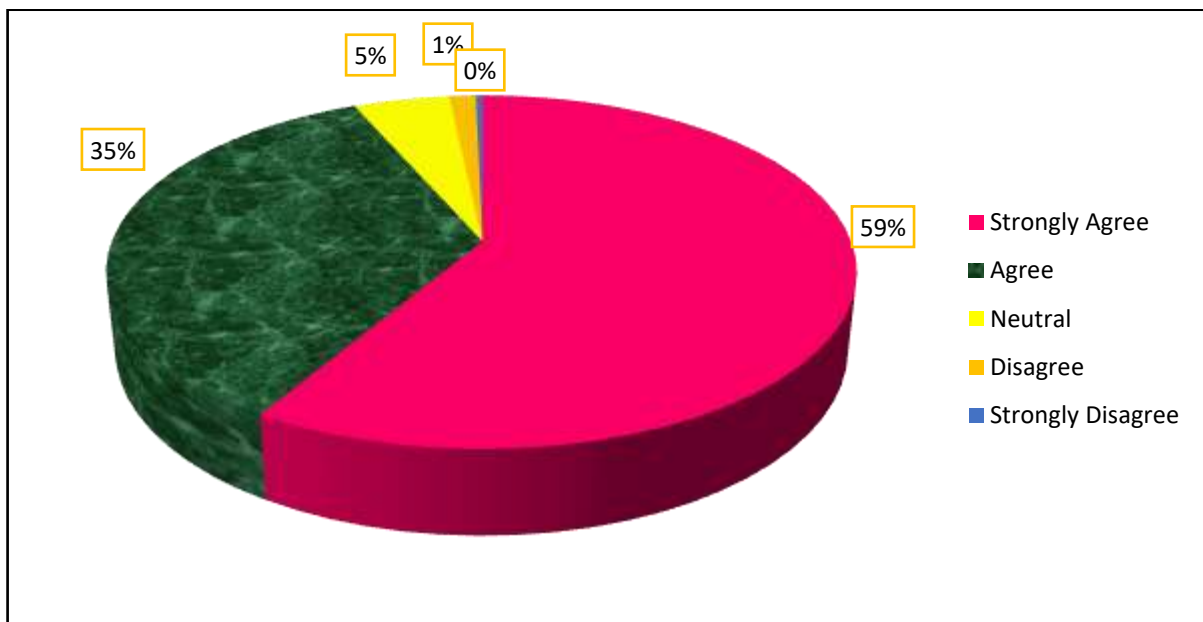
18. Efforts are made by the institute/ teachers to inculcate soft skills, life skills and Employability skills to make you ready for the world of work.



19. What percentage of teachers use ICT tools such as LCD projector, Multimedia, etc. While teaching.



20. The overall quality of teaching-learning process in your institute is very good.




Coordinator
Feedback Committee


IQAC
Co-ordinator




Principal
Savitribai Phule Mahila Mahavidyalaya
SATARA